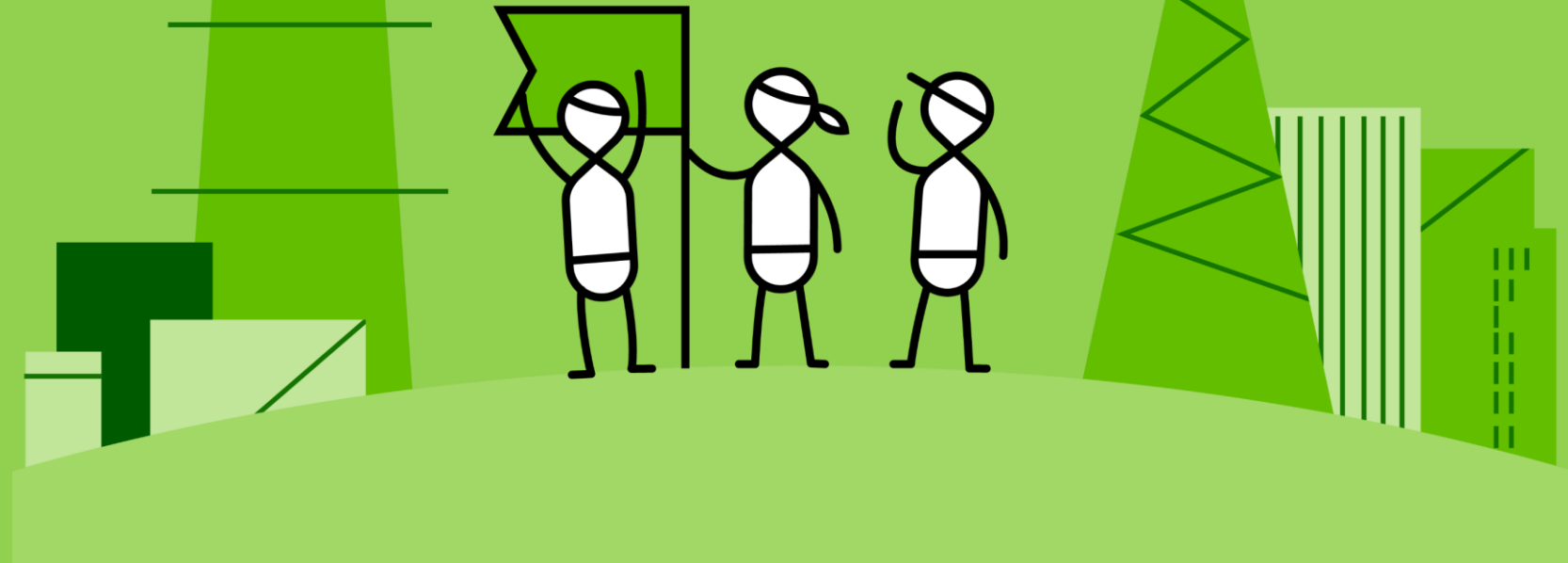


ZYXEL

Your Networking Ally

How to set up a VPN solution for at home working with Zyxel

Daniel Marsh
UK Sales Engineer



Objectives

- **Define the typical architecture for 3 concrete cases**
- List of Products and licences to Install
 - Installation procedures
- **The 3 typical examples**
 - VSE: 5 employees
 - SMB: 50 employees
 - Schools/Colleges etc.



Why Install VPN connections for home workers?

- So that they have access to company resources
 - Servers
 - Business applications
 - Phone Systems etc...
- To ensure Security
 - Communication between home workers and the company
 - From the corporate network itself

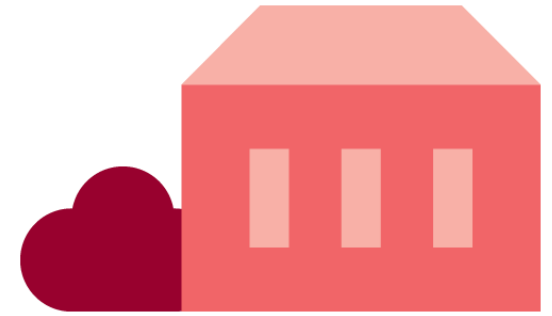


ZYXEL

Your Networking Ally

1st case: VSE of 5 people

The Company

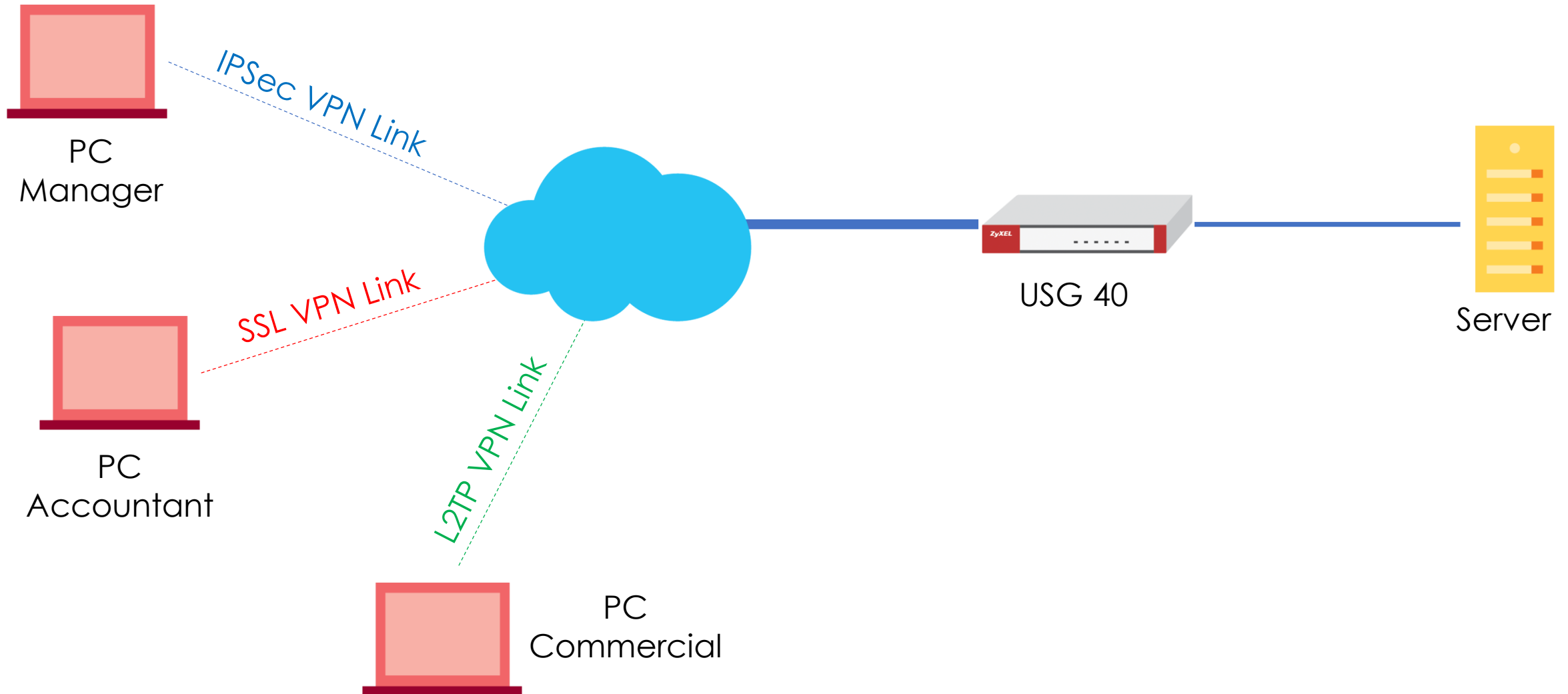


- Small Company (5 Users)
 - The Entrepreneur
 - 1 Accountant
 - 1 Sales Person
 - 2 Technicians
- All employees are equipped with a PC/Laptop
- A server contains all the company's files
- The Accountant must connect to administration servers located in the Office

Topology

References to buy:

- USG40 Pack UTM: USG40-EU0102F
- IPsec VPN license for Windows client: SECUEXTENDER-ZZ0201F



The equipment

- USG 40
 - Capacity:
 - Up to 10 users
 - 20 IPSec VPN
 - 5 SSL VPN included (up to 15 with licence)
 - Security with UTM licence
 - Anti-Virus
 - Anti-Spam
 - Content Filtering
 - IDP



The different types of VPN



- There are different VPN client to site
 - IPSec
 - L2TP
 - SSL
- The easiest to set up is SSL, this is the preferred method as ISP's cannot block this like some do with the others.
 - Free software on windows PCs, payed on MacOS
 - *To discover all VPN solutions => Security training (TBC)*
- IPSec : with paid license only on PC
- L2TP VPN, not very secure, but native on the workstations

2nd case: SME of 50 people

The Company

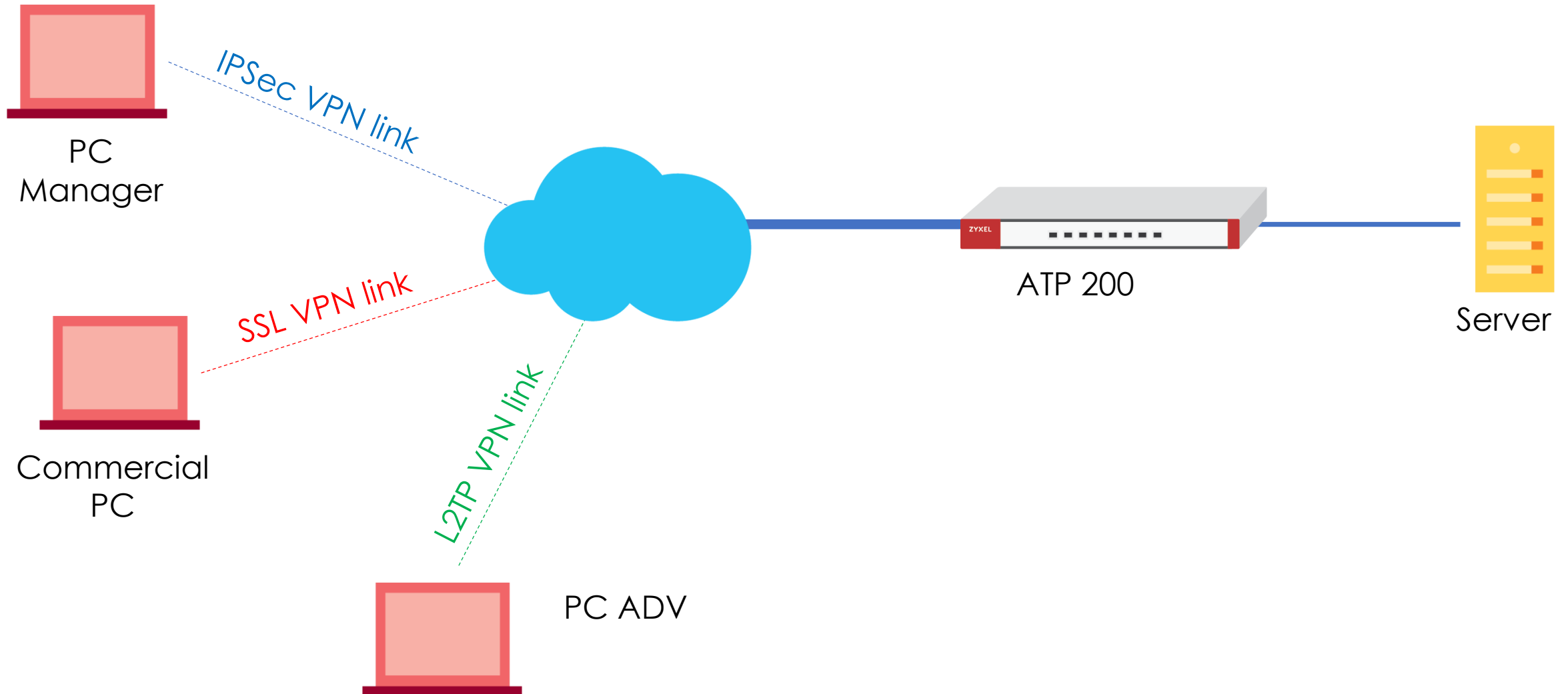
- Small Medium Company of 50 people
- All people with PC/Laptop can homework (upto 40 VPN Users)
- A server located at the Office contains all Documents/Files
- Intensive use of collaborative work tools: Teams, Skype for Business, etc...



Topology

References to buy:

- ATP 200 : ATP200-EU0102F



The equipment

- ATP 200
 - Capacity:
 - Up to 50 users
 - 40 IPSec VPN
 - 10 SSL VPN included
 - Security with UTM EN Pack Gold licence (included for 1 year)
 - Anti-Virus
 - Anti-Spam
 - Content Filtering
 - IDP
 - AntiBotnet
 - Sandboxing



ZYXEL

Your Networking Ally

3rd case: College of 100 Teachers

A College

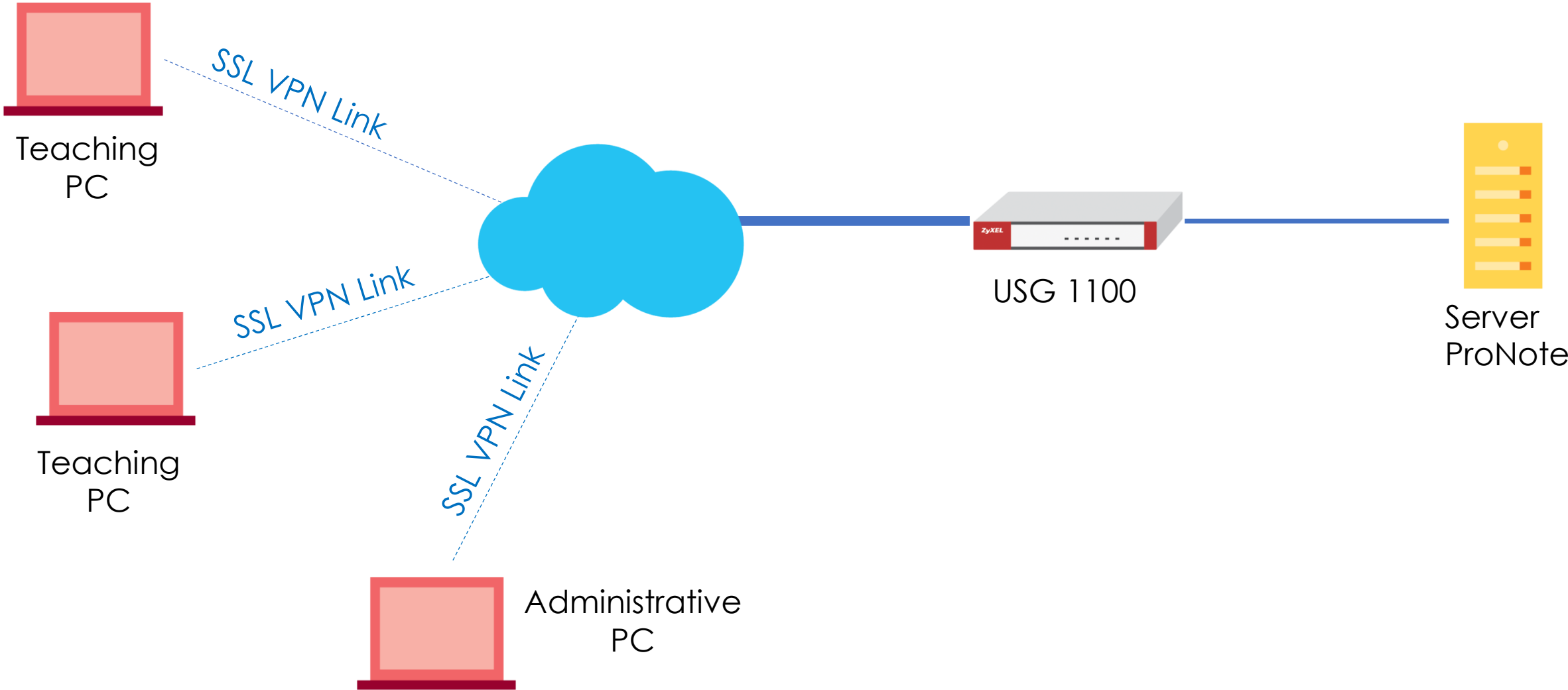


- College

- An administrative team that only has professional but fixed PCs
 - 100 Teachers, who only have PC's(Windows or Mac)
 - 1 Sales Person
 - 2 Technicians
-
- Educational resources are stored on a local server (File Shares etc.)

Topology

References to buy:
- USG1100 Pack UTM: USG1100-EU0102F



The equipment

- USG1100
 - Capacity:
 - Up to 350 Users
 - 1,000 VPN IP Sec
 - 250 SSL VPN included (up to 500 with licence)
 - Security with UTM licence
 - Anti-Virus
 - Anti-Spam
 - Content Filter
 - IDP



Zyxel Support Campus

<https://support.zyxel.eu/hc/en-us>

ZYXEL | SUPPORT
Service Portal

Contact us English ▼ Sign in

Every user will get smooth,
consistent fast connections, every time

Search our knowledgebase



Guide



Virtual Lab(Demo)



Warranty & Services

Popular Help Topics

- VPN Guideline - Choosing the right VPN-type for your Home-Office (+Useful Links & Tutorials)
- IPSec VPN Site-To-Site Configuration on USG/ZyWall devices
- How to configure VLAN on USG device
- Weekly Firmware / Support Version / Lab Version
- List of Nebula-compatible devices
- Register your product on MyZyxel.com
- Warranty Terms and Conditions
- Different ways to work from remote location with Zyxel products
- How to configure IPSec Site to Site VPN while one Site is behind a NAT router
- Reinstallation of the Zyxel IPSec VPN client
- How to configure VLAN on Zyxel Switch
- myZyxel Marketplace - Purchase Licenses
- Where can I download Firmwares / Datasheets / User guides for my Zyxel device?

ZYXEL

Your Networking Ally

Download The Handouts



NEW

VPN1000



Q&A

- Interfaces**
12 x GbE (Configurable)
2 x SFP
- SPI Firewall Throughput**
8,000 Mbps
- VPN Throughput**
1,500 Mbps
- AP Controller**
8/1032

ZYXEL

Your Networking Ally